

sparco®

GYMKHANA 07527TgCol

D.P.I.: EN ISO 20345:2011

MADE IN: CHINA

SIZE: 36/48 (UK 3½ - 13)

## PICTURES

## DESCRIPTION

## CERTIFICATION S1P

Low-cut S1P sneaker-style safety footwear, with eva midsole and multigrip rubber tread, velour microfibre upper and breathable micro-perforated fabric. convenient for all uses.

## FEATURES

## CERTIFICATION:

S1P - SRC

## TOE CAP:

in non-magnetic composite, insulating, resistant to 200J.

## ANTI-PERFORATION INSOLE:

made from zero-perforation textile fibre.

## SOLE:

EVA midsole and nitrile rubber tread with energy absorption on heel.

## REMOVABLE INSOLE:

antistatic in PU with ergonomic thermoforming.

## LINING:

breathable micro-perforated 3D fabric.

## UPPER:

in velour microfibre and breathable micro-perforated fabric. Additional colored laces included.

07527tgA2BM

additional laces  
Light Blue

07527tgBMGF

additional laces  
Navy Blue

07527tgNRNR

additional laces  
Dark Grey

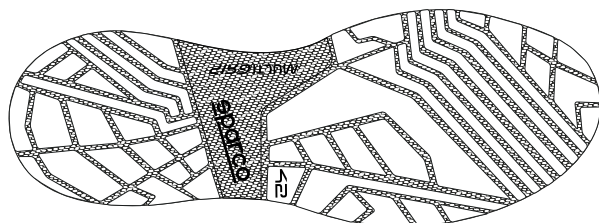
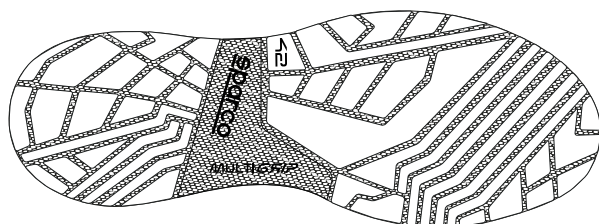
07527tgVSLI

additional laces  
Dark Green

07527MRtgBM

additional laces  
Red

## OUTSOLE



## INSOLE

07527tgA2BM



07527tgBMGF



07527tgNRNR



07527tgVSLI



07527MRtgBM



EVA midsole and nitrile rubber tread with energy absorption on heel. with energy absorption in the heel. Antistatic and resistance to oils and hydrocarbons.

INSOLE in PU with ergonomic thermo-forming

GYMKHANA 07527TgCol

D.P.I.: EN ISO 20345:2011

MADE IN: CHINA

SIZE: 36/48 (UK 3½ - 13)

## USER MANUAL



FRONT

BACK

**USER MANUAL MULTILANGUAGE** (IT, EN, ES, DE, FR, BG, CS, DAN, EL, EST, FIN, HR, HUN, LETT, LIT, NL, POL, PT, RO, SK, SL, SVE, TR)  
size 120 x 165 mm

## LABELS

**LOGOS**

micro-injected onto the upper  
(Sparco on the back and on side,  
GYMKHANA on side-back)

**COMPOSITION LABEL**

sticked on the right insole  
Size 28 x 28 mm

**INTERNAL TONGUE LABEL**

onto the lining inside  
Size 50 x 15 mm

**SIZE & BRAND**

onto the outsole bottom

## PACKAGING



**SPARCO TEAMWORK BOX**  
in cardboard blue-white-orange  
and protective inner tissue paper  
Size 343x205x118 mm

**EXTERNAL LABEL**  
upon the prepared side of the box, reporting product's feature,  
Certification, production date, batch number, code, QR-code and Barcode  
Size 105x60 mm