



ROLLI IN SPUGNA

04555-58

Test Report

No. SH9170283/CHEM

Date: Sep. 7, 2009

Page 1 of 5

The following sample(s) was/were submitted and identified by/on behalf of the client as:

Sample Name : BLUE SPONGE, PURPLE SPONGE, GREEN SPONGE
SGS Ref No. : SHD002923144
Country of Destination :

Sample Receiving Date : Sep.02, 2009
Testing Period : Sep.02-07, 2009

Test Requested : As specified by client, selected parts of the submitted sample(s) for compliance with Public Law 110-314 (Consumer Product Safety Improvement Act of 2008, CPSIA):-
1)Lead in accessible substrate materials
2)Phthalates

Test Method/Test Results: Please refer to next page(s).

Result Summary :

Table with 3 columns: Item, Test Parameter, Conclusion. Row 1: 1, CPSIA section 101(a)(2) - Lead in accessible substrate materials (including Children's Metal Jewelry), Refer to test result. Row 2: 2, CPSIA section 108 - Phthalates, Refer to test result.

Signed for and on behalf of
SGS-CSTC Chemical Laboratory

Sandy Hao (handwritten signature)

Sandy Hao
Lab Manager

This document is issued by the Company under its General Conditions of Service printed overleaf or available on request and accessible at http://www.sgs.com/terms\_and\_conditions.htm. Attention is drawn to the limitation of liability, indemnification and jurisdiction issues defined therein. Any holder of this document is advised that information contained hereon reflects only the findings at the time of its intervention only and within the limits of Client's Instructions, if any. The Company's sole responsibility is to its Client and this document does not liberate parties to a transaction from exercising all their rights and obligations under the transaction documents. Any unauthorized alteration, forgery or falsification of the content or appearance of this document is unlawful and offenders may be prosecuted to the fullest extent of the law. Unless otherwise stated the results shown in this test report refer only to the sample(s) tested. This document cannot be reproduced except in full, without prior approval of the Company



# Test Report

No. SH9170283/CHEM

Date: Sep. 7, 2009

Page 2 of 5

Test Results:

## 1) Lead in accessible substrate materials(Unit:%)

Method : CPSC Test Method: CPSC-CH-E1002-08 'Standard Operation Procedure for Determining Total Lead (Pb) in Non-Metal Children Product'

Test item	1	2	3	Permissible Limit
Lead (Pb)	ND	ND	ND	N/A*

\* Lead test requirement on accessible material in the submitted sample is not applicable. The product scope that mentioned by CPSIA section 101(a)(2) is for children product up to age 12, please refer to below table for the reference limit.

Scope	Requirement	Effective date
Lead in accessible substrate	≤ 0.03 %	14 August 2009
	≤ 0.01%	14 August 2011

Note:

1. % = percentage by weight
2. 1% = 10000ppm (mg/kg)
3. ND = not detected
4. Method Detection Limit = 0.002 %

## 2) Phthalates (Unit:%)

Method: With reference to ASTM D3421-75. Analysis was performed by Gas Chromatography / Mass Spectrometry.

Composite Group Result

### Concentration of phthalates in components of toy product

Test item(s)	1+2+3	Permissible Limit
Dibutyl Phthalate(DBP)	ND	N/A*
Benzylbutyl Phthalate(BBP)	ND	N/A*
Bis-(2-ethylhexyl) Phthalate(DEHP)	ND	N/A*

This document is issued by the Company under its General Conditions of Service printed overleaf or available on request and accessible at [http://www.sgs.com/terms\\_and\\_conditions.htm](http://www.sgs.com/terms_and_conditions.htm). Attention is drawn to the limitation of liability, indemnification and jurisdiction issues defined therein. Any holder of this document is advised that information contained hereon reflects the findings at the time of its intervention only and within the limits of Client's instructions, if any. The Company's sole responsibility is to its Client and this document does not obligate parties to a transaction from exercising all their rights and obligations under the transaction documents. Any unauthorized alteration, forgery or falsification of the content or appearance of this document is unlawful and offenders may be prosecuted to the fullest extent of the law. Unless otherwise stated the results shown in this test report refer only to the sample(s) tested. This document cannot be reproduced except in full, without prior approval of the Company.





# Test Report

No. SH9170283/CHEM

Date: Sep. 7, 2009

Page 3 of 5

## Concentration of phthalates in components of toy that can be placed in the mouth or childcare article

<u>Test item(s)</u>	<u>1+2+3</u>	<u>Permissible Limit</u>
Diisononyl Phthalate(DINP)	ND	N/A*
Di-n-octyl Phthalate(DNOP)	ND	N/A*
Diisodecyl Phthalate(DIDP)	ND	N/A*

\* Phthalate test requirement on tested material in the submitted sample is not applicable. The product scope that mentioned by CPSIA section 108 is for toy product up to age 12, the reference limit is 0.1% of each phthalates per component.

### Note :

1. % = percentage by weight
2. 1% = 10000ppm (mg/kg)
3. ND = not detected
4. Method Detection Limit for each of DBP, BBP, DEHP and DNOP = 0.003 %
5. Method Detection Limit for each of DINP and DIDP = 0.01 %
6. Results presented in this table are the calculated results based on the above tested components. Composite test has been performed as per special request of client
7. The result is calculated using the total sample weight

### Test Part Description:

1. Purple foam
2. Green foam
3. Blue foam

This document is issued by the Company under its General Conditions of Service printed overleaf or available on request and accessible at [http://www.sgs.com/terms\\_and\\_conditions.htm](http://www.sgs.com/terms_and_conditions.htm). Attention is drawn to the limitation of liability, indemnification and jurisdiction issues defined therein. Any holder of this document is advised that information contained hereon reflects the findings at the time of its intervention only and within the limits of Client's instructions, if any. The Company's sole responsibility is to its Client and this document does not separate parties to a transaction from exercising all their rights and obligations under the transaction documents. Any unauthorized alteration, forgery or falsification of the content or appearance of this document is unlawful and offenders may be prosecuted to the fullest extent of the law. Unless otherwise stated, the results shown in this test report refer only to the sample(s) tested. This document cannot be reproduced except in full, without prior approval of the Company.





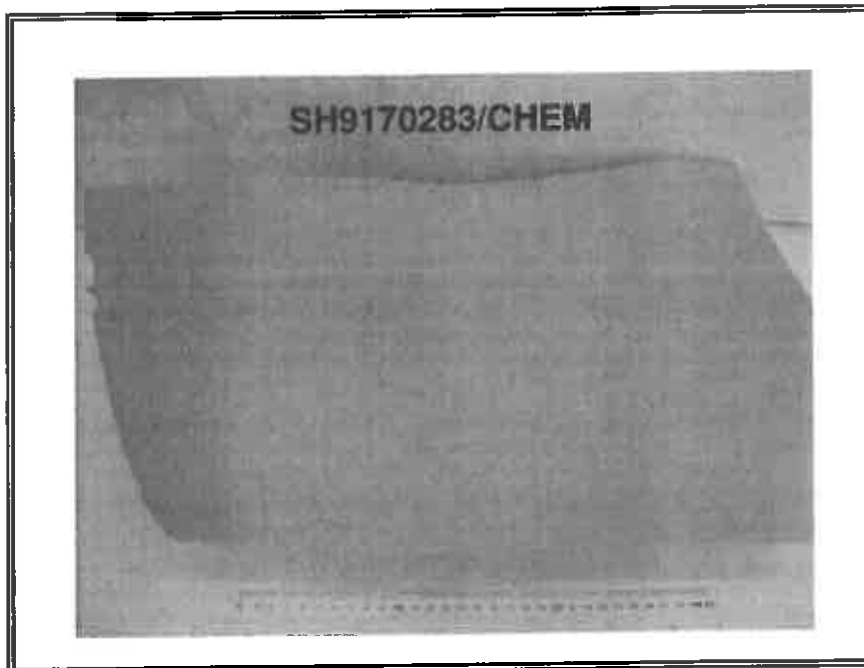
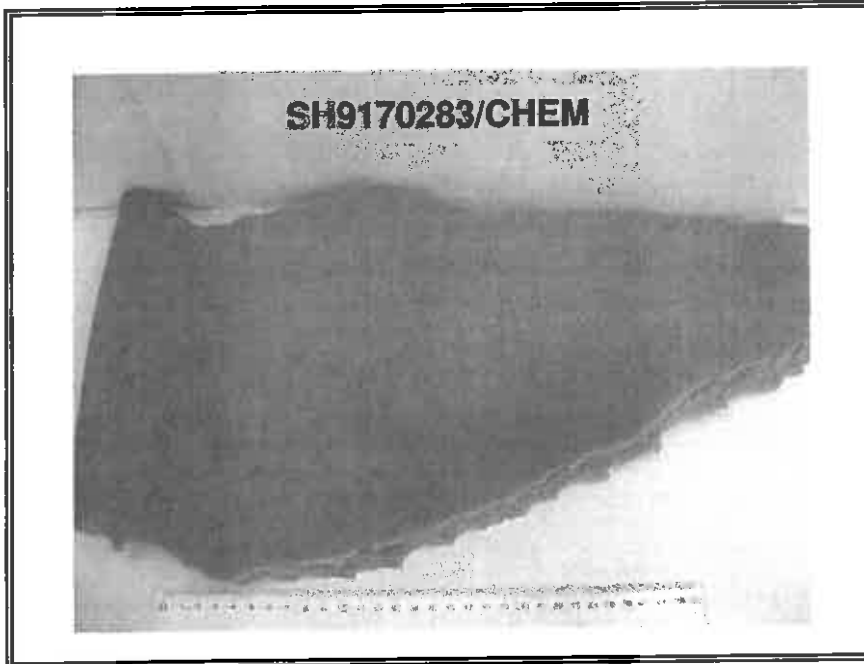
**Test Report**

Sample photo:

No. SH9170283/CHEM

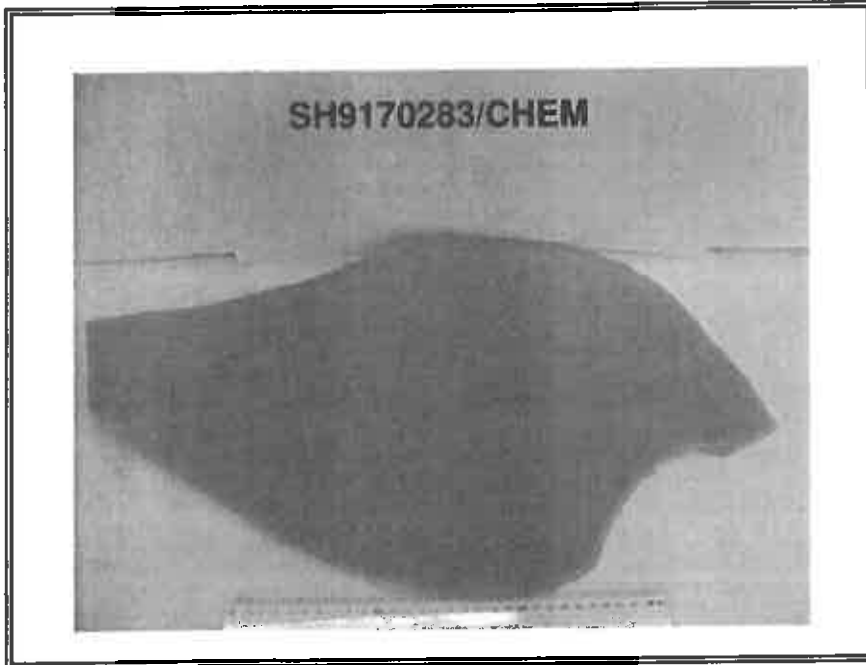
Date: Sep. 7, 2009

Page 4 of 5



This document is issued by the Company under its General Conditions of Service printed overleaf or available on request and accessible at [http://www.sgs.com/terms\\_and\\_conditions.htm](http://www.sgs.com/terms_and_conditions.htm). Attention is drawn to the limitation of liability, indemnification and jurisdiction issues defined therein. Any holder of this document is advised that information contained hereon reflects the findings at the time of its intervention only and within the limits of Client's instructions, if any. The Company's sole responsibility is to its Client and this document does not exonerate parties to a transaction from exercising all their rights and obligations under the transaction documents. Any unauthorized alteration, forgery or falsification of the content or appearance of this document is unlawful and offenders may be prosecuted to the fullest extent of the law. Unless otherwise stated the results shown in this test report refer only to the sample(s) tested. This document cannot be reproduced except in full, without prior approval of the Company.





SGS authenticate the photo on original report only

\*\*\* End of Report \*\*\*

This document is issued by the Company under its General Conditions of Service printed overleaf or available on request and accessible at [http://www.sgs.com/terms\\_and\\_conditions.htm](http://www.sgs.com/terms_and_conditions.htm). Attention is drawn to the limitation of liability, indemnification and jurisdiction issues defined therein. Any holder of this document is advised that information contained hereon reflects the findings at the time of its intervention only and within the limits of Client's instructions, if any. The Company's sole responsibility is to its Client and this document does not exonerate parties to a transaction from exercising all their rights and obligations under the transaction documents. Any unauthorized alteration, forgery or falsification of the content or appearance of this document is unlawful and offenders may be prosecuted to the fullest extent of the law. Unless otherwise stated the results shown in this test report refer only to the sample(s) tested. This document cannot be reproduced except in full, without prior approval of the Company.





**Test Report**

No. SH9170282/CHEM

Date: Sep. 7, 2009

Page 1 of 4

The following sample(s) was/were submitted and identified by/on behalf of the client as:

Sample Name : BLACK PLASTIC HANDLE  
SGS Ref No. : SHD002923143  
Country of Destination :

Sample Receiving Date : Sep.02, 2009  
Testing Period : Sep.02-07, 2009

Test Requested : (1) As specified by client, selected parts of the submitted sample(s) for compliance with Public Law 110-314 (Consumer Product Safety Improvement Act of 2008, CPSIA):-  
1-1)Lead in accessible substrate materials  
1-2)Phthalates  
(2) To determine Bisphenol-A content in the submitted samples

Test Method/Test Results: Please refer to next page(s).

Result Summary :

Item	Test Parameter	Conclusion
1-1	CPSIA section 101(a)(2) - Lead in accessible substrate materials (including Children's Metal Jewelry)	Refer to test result
1-2	CPSIA section 108 - Phthalates	Refer to test result

Signed for and on behalf of  
SGS-CSTC Chemical Laboratory

Sandy Hao  
Lab Manager

This document is issued by the Company under its General Conditions of Service printed overleaf or available on request and accessible at [http://www.sgs.com/terms\\_and\\_conditions.htm](http://www.sgs.com/terms_and_conditions.htm). Attention is drawn to the limitation of liability, indemnification and jurisdiction issues defined therein. Any holder of this document is advised that information contained hereon reflects the Company's findings at the time of its intervention only and within the limits of Client's instructions, if any. The Company's sole responsibility is to its Client and this document does not exonerate parties to a transaction from exercising all their rights and obligations under the transaction documents. Any unauthorized alteration, forgery or falsification of the content or appearance of this document is unlawful and offenders may be prosecuted to the fullest extent of the law. Unless otherwise stated the results shown in this test report refer only to the sample(s) tested. This document cannot be reproduced except in full, without prior approval of the Company.





**Test Report**

No. SH9170282/CHEM

Date: Sep. 7, 2009

Page 2 of 4

Test Method

: (2) With reference to EPA 3550C: 2007.

Analysis was performed by HPLC-DAD- MS.

Test Results:

**1-1) Lead in accessible substrate materials(Unit:%)**

Method (non-metallic materials): CPSC Test Method: CPSC-CH-E1002-08 'Standard Operation Procedure for Determining Total Lead (Pb) in Non-Metal Children Product'

Test item	1	Permissible Limit
Lead (Pb)	ND	N/A*

\* Lead test requirement on accessible material in the submitted sample is not applicable. The product scope that mentioned by CPSIA section 101(a)(2) is for children product up to age 12, please refer to below table for the reference limit.

Scope	Requirement	Effective date
Lead in accessible substrate	≤ 0.03 %	14 August 2009
	≤ 0.01%	14 August 2011

Note:

1. % = percentage by weight
2. 1% = 10000ppm (mg/kg)
3. ND = not detected
4. Method Detection Limit = 0.002 %

**1-2) Phthalates (Unit:%)**

Method: With reference to ASTM D3421-75 .Analysis was performed by Gas Chromatography / Mass Spectrometry.

**Concentration of phthalates in components of toy product**

Test item(s)	1	Permissible Limit per component
Dibutyl Phthalate(DBP)	ND	N/A*
Benzylbutyl Phthalate(BBP)	ND	N/A*
Bis-(2-ethylhexyl) Phthalate(DEHP)	ND	N/A*

This document is issued by the Company under its General Conditions of Service printed overleaf or available on request and accessible at [http://www.sgs.com/terms\\_and\\_conditions.htm](http://www.sgs.com/terms_and_conditions.htm). Attention is drawn to the limitation of liability, indemnification and jurisdiction issues defined therein. Any holder of this document is advised that information contained hereon reflects the findings at the time of its intervention only and within the limits of Client's instructions, if any. The Company's sole responsibility is to its Client and this document does not generate parties to a transaction from exercising all their rights and obligations under the transaction documents. Any unauthorized alteration, forgery or falsification of the content or appearance of this document is unlawful and offenders may be prosecuted to the fullest extent of the law. Unless otherwise stated the results shown in this test report refer only to the sample(s) tested. This document cannot be reproduced except in full, without prior approval of the Company.





**Test Report**

No. SH9170282/CHEM

Date: Sep. 7, 2009

Page 3 of 4

Concentration of phthalates in components of toy that can be placed in the mouth or childcare article

Test item(s)	1	Permissible Limit per component
Diisononyl Phthalate(DINP)	ND	N/A*
Di-n-octyl Phthalate(DNOP)	ND	N/A*
Diisodecyl Phthalate(DIDP)	ND	N/A*

\* Phthalate test requirement on tested material in the submitted sample is not applicable. The product scope that mentioned by CPSIA section 108 is for toy product up to age 12, the reference limit is 0.1% of each phthalates per component.

**Note :**

1. % = percentage by weight
2. 1% = 10000ppm (mg/kg)
3. ND = not detected
4. Method Detection Limit for each of DBP, BBP, DEHP and DNOP = 0.003 %
5. Method Detection Limit for each of DINP and DIDP = 0.01 %

**(2) Bisphenol-A content (Unit: mg/kg)**

Element	Method (refer to)	1	MDL
Bisphenol-A	(2)	ND	10

**Note:**

- (1) mg/kg = ppm
- (2) ND = Not Detected
- (3) MDL = Method Detection Limit

**Test Part Description:**

1. Black plastic handle

This document is issued by the Company under its General Conditions of Service printed overleaf or available on request and accessible at [http://www.sgs.com/terms\\_and\\_conditions.htm](http://www.sgs.com/terms_and_conditions.htm). Attention is drawn to the limitation of liability, indemnification and jurisdiction issues defined therein. Any holder of this document is advised that information contained herein reflects the findings at the time of its intervention only and within the limits of Client's instructions, if any. The Company's sole responsibility is to its Client and this document does not operate parties to a transaction from exercising all their rights and obligations under the transaction documents. Any unauthorized alteration, forgery or falsification of the content or appearance of this document is unlawful and offenders may be prosecuted to the fullest extent of the law. Unless otherwise stated the results shown in this test report refer only to the sample(s) tested. This document cannot be reproduced except in full, without prior approval of the Company.





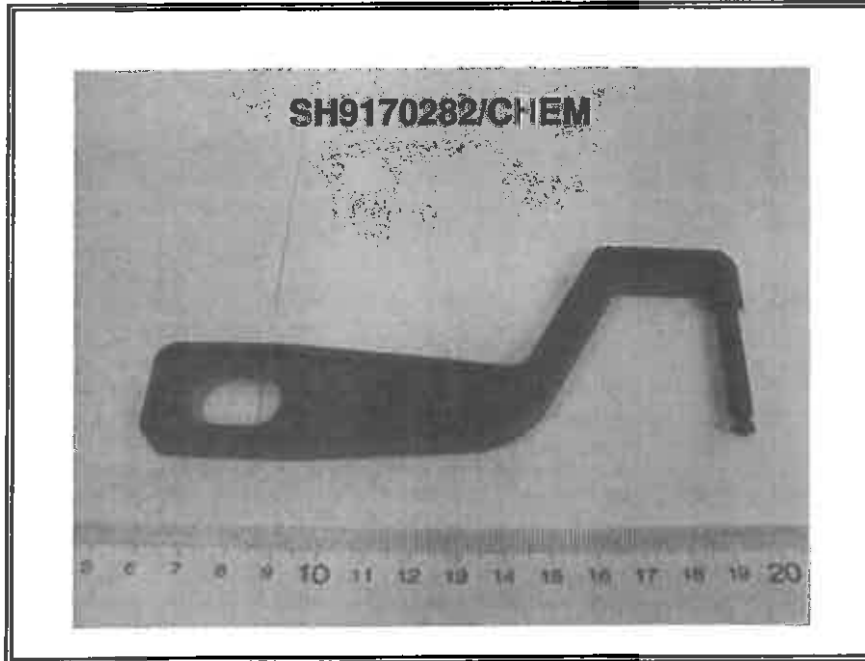
## Test Report

Sample photo:

No. SH9170282/CHEM

Date: Sep. 7, 2009

Page 4 of 4



SGS authenticate the photo on original report only

\*\*\* End of Report \*\*\*

This document is issued by the Company under its General Conditions of Service printed overleaf or available on request and accessible at [http://www.sgs.com/terms\\_and\\_conditions.htm](http://www.sgs.com/terms_and_conditions.htm). Attention is drawn to the limitation of liability, indemnification and jurisdiction issues defined therein. Any holder of this document is advised that information contained hereon reflects findings at the time of its intervention only and within the limits of Client's instructions, if any. The Company's sole responsibility is to its Client and this document does not operate parties to a transaction from exercising all their rights and obligations under the transaction documents. Any unauthorized alteration, forgery or falsification of the content or appearance of this document is unlawful and offenders may be prosecuted to the fullest extent of the law. Unless otherwise stated, the results shown in this test report refer only to the sample(s) tested. This document cannot be reproduced except in full, without prior approval of the Company.

