

D.P.I.: EN ISO 20345:2011

MADE IN: CHINA

SIZE: 36/48 (UK 3½ - 13)

PICTURES

07519tgNRNR
CERTIFICATION S1-P

DESCRIPTION

Low-cut S1-P safety shoe of fine suede, particularly durable and suitable for all types of use (indoor and outdoor).

FEATURES

CERTIFICATION:

S1P - SRC

TOE CAP:

composite 200J resistant

INSOLE:

Anti-perforation textile fibre

SOLE:

Dual density PU injected with energy absorption in the heel

REMOVABLE INSOLE:

Antistatic PU

LINING:

Breathable mesh

UPPER:

Water-repellent fine suede.

EXTRA:

Metal-free

OUTSOLE



Dual-density PU sole
Antistatic and resistance to oils and hydrocarbons.

INSOLE



INSOLE in PU

USER MANUAL

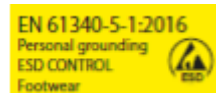
**USER MANUAL MULTILANGUAGE**

(IT, EN, ES, DE, FR, BG, CS, DAN, EL, EST, FIN, HR, HUN, LETT, LIT, NL, POL, PT, RO, SK, SL, SVE, TR) size 120 x 165 mm

LABELS



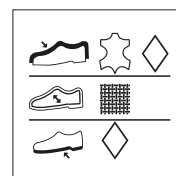
INTERNAL TONGUE LABEL
sewn or printed inside the tongue
Size 34 x 42 mm



INTERNAL TONGUE ESD LABEL
sewn or printed inside the tongue



SIZE LABEL
sewn or printed together with
the internal label
Size 17 x 14 mm



COMPOSITION LABEL
adhesive glued into the lining
inside of the right shoe
Size 28 x 28 mm