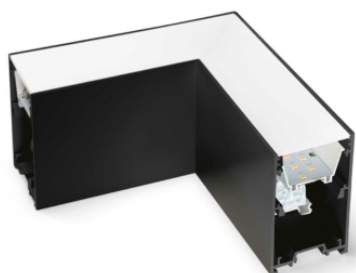


Info generali

Tecnico - Accessorio

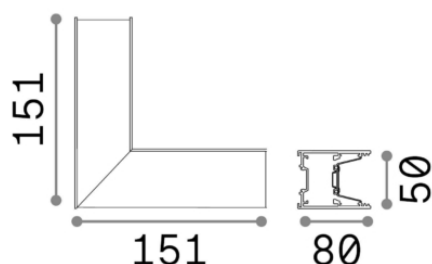
Indoor linear fitting with integrated LED sources and direct light emission



Ean	8021696191461
Articolo	FLUO CORNER 4000K BK
Installazione	Accessory
Garanzia	5 years
Peso lordo	0.8 kg
Volume	0.002304 m ³

Info tecniche e installative

Peso netto	0.58 kg
Classe di isolamento	I
Grado di protezione	IP20
Temperatura d'esercizio	0° ~ +40 °C
Dimmer	Non-dimmable, On-Off
Tipo accessorio	Optional
Alimentazione	220-240 V AC 50/60 Hz
Alimentatore	In-built, included YES (by qualified operators only), electronic



Info sorgente e prestazionali

Sorgente integrata	Integrated LED module
Sorgente sostituibile	YES (by qualified operators only)
Potenza	8W
Emissione	Direct
Consumo massimo	max 8,00 W
Caratteristiche LED	LED SMD SAMSUNG
CCT	4000 K
Durata LED (t. 25°C)	50000 h
CRI	> 80
SDCM	3
Fascio luminoso	105°
Flusso sorgente	1000 lm
Flusso utile	720 lm
Potenza in stand-by	< 0.50