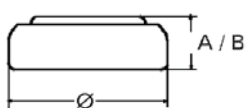


## Data Sheet

## Alkaline Manganese

## V 13 GA



**Type Number**..... 4276  
**Designation IEC**..... LR 44  
**System**..... Manganese Dioxide/  
 Zinc/KOH-Electrolyte

**Nominal Voltage**..... 1,5V  
**Typical Capacity C**..... 125 mAh  
 Load 5.6 kOhm, at 20°C down to 1.2 V

**Weight (approx.)**..... 1,8 g  
**Volume**..... 0,51 ccm  
**Coding**..... Manufacturing Month/Year  
 by Letter Code

**Temperature Ranges** min max.  
 Storage..... -10°C 65°C  
 Discharge..... -10°C 65°C

**Dimensions** min max.  
 Diameter..... 11,25 11,6  
 Height (A/B)..... 5 5,4

**Segment**..... Electronic

**Main Applications**..... Watch  
 Photo  
 Electronic

### Typical Capacities (at 20°C)

Discharge Type	Load	End Voltage:	1.2V
Continuous 24h/d, 7d/w Current [ $\mu$ A]	5600 $\Omega$	Time: [h]	482
		Capacity [mAh]:	125
	270	Energy [MWh]:	168

All Data contained herein is for single cells  
 For battery applications, performance data may vary from single cell data, depending on specific battery configuration