

D.P.I.: EN ISO 20345:2011

MADE IN: CHINA

SIZE: 36/47 (UK 3½ - 12)

## PICTURES

## CERTIFICATION S3 - WR



07533tgNRA2

## DESCRIPTION

Safety ankle boots with special dry respiration system (drs) water-resistant membrane, in high-quality water-repellent microfibre and micro-injected inserts. hard-wearing and breathable, it is ideal in particularly damp or wet environments

## FEATURES

**CERTIFICATION:**

S3 - SRC - WR

**TOE CAP:**

fibreglass, non-magnetic, insulating, resistant to 200J.

**ANTI-PERFORATION INSOLE:**

made from zero-perforation textile fibre.

**SOLE:**

dual-density polyurethane with energy absorption on the heel.

**REMOVABLE INSOLE:**

antistatic in PU.

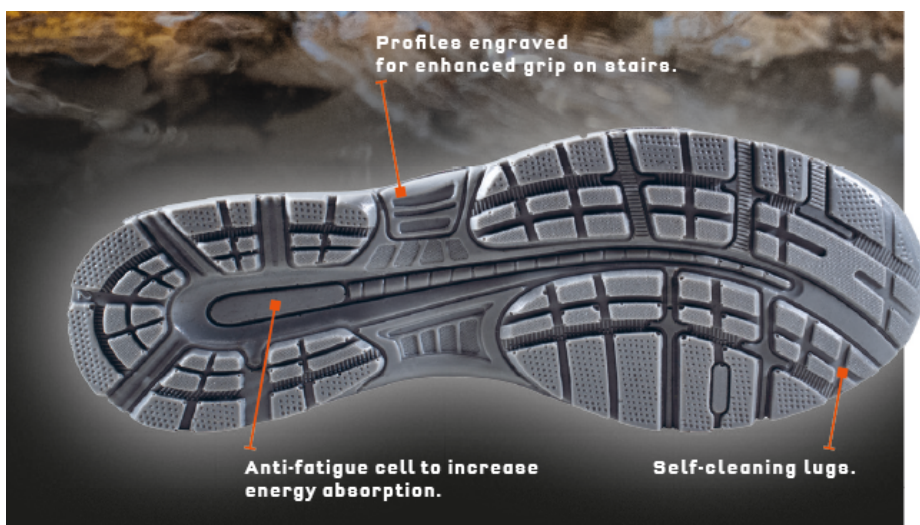
**LINING:**

breathable micro-perforated 3D fabric.

**UPPER:**

in high-quality water-repellent microfibre, micro-injected inserts and special DRS WATER-RESISTANT membrane.

## OUTSOLE



Dual-density polyurethane with energy absorption on the heel.

## INSOLE



UPPER SIDE

LOWER SIDE

## DETAILS



PRINTED SPARCO LOGO & GRAPHIC onto the upper collar on both internal and external side

Antistatic in PU with size and SPARCO TEAMWORK logo printed on the heel.

D.P.I.: EN ISO 20345:2011

MADE IN: CHINA

SIZE: 36/47 (UK 3½ - 12)

USER MANUAL

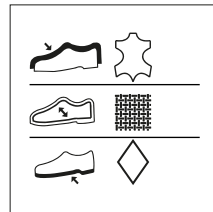


FRONT

BACK

**USER MANUAL MULTILANGUAGE** (IT, EN, ES, DE, FR, BG, CS, DAN, EL, EST, FIN, HR, HUN, LETT, LIT, NL, POL, PT, RO, SK, SL, SVE, TR)  
size 120 x 165 mm

LABELS



**SIZE LABEL**

sewn or printed together with the internal label  
Size 17 x 14 mm

**COMPOSITION LABEL**

onto the lining (inside the right shoe) or onto the outsole  
Size 28 x 28 mm

**INTERNAL TONGUE LABEL**

onto the lining inside  
Size 50 x 15 mm

**TEAMWORK TAPE**

sewn on the tongues  
Size 15x60 mm

PACKAGING



**SPARCO TEAMWORK BOX**  
in cardboard blue-white-orange  
and protective inner tissue paper  
Size 343x258x123 mm

**EXTERNAL LABEL**  
upon the prepared side of the box, reporting product's feature,  
Certification, production date, batch number, code, QR-code and Barcode  
Size 105x60 mm